



## NSF Certified Class II B2 Biological Safety Cabinet



The front window glass can be lowered below the operating area

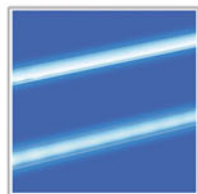


**Wind Speed Sensor**



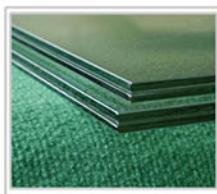
**Work Zone**

Work zone, made of 304 stainless steel, is surrounded by negative pressure.



**UV Lamp**

Emission of 253.7 nanometers for most efficient decontamination.



**Front Window**

Two-layer laminated toughened glass >6mm, anti UV



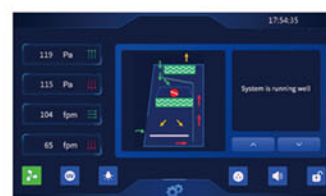
**Footmaster Caster**

Universal caster with brake and leveling feet

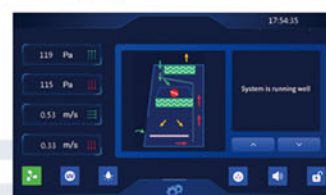


**Waterproof Socket**

2 waterproof sockets are located in the side wall, for optimum convenience of using small devices inside the cabinet.



Display for BSC-4FB2-NA



Display for BSC-4FB2-GL

**Color Touch Screen**

Touch operation, real-time and clearer display of various values and appointment timing function.

## ADVANTAGE

1. Motorized front window.
2. 7-inch large touch color display: touch operation, real-time and clearer display of various values of the safety cabinet, dynamic air flow pattern diagram, fault alarm sound and light prompt.
3. The power-on password can be set to prevent mis-operation by irrelevant personnel.
4. EC Fan, automatically adjust the wind speed.
5. With power-failure memory function, the state before power-failure will be restored after power-on and there will be visual prompts and alarms.
6. The integrated design of the operation area makes it easy to disassemble and clean.
7. The cabinet is separated from the base. The height of the adjustable base can be customized.
8. Interlocking function: UV lamp and front window; UV lamp and fan; fan and front window.
9. It has the function of appointment timing, which can automatically set the time of starting and shutting down the safety cabinet and the running time of ultraviolet lamps, fan and sockets.
10. The front window closes the trigger signal, so that the sterilization and disinfection function of the ultraviolet lamp is normally turned on.
11. The one-piece hand resting surface has a larger contact area with the arm and is more comfortable. air speed adjustable with filter block.

## TECHNICAL PARAMETERS

Model	BSC-4FB2-NA	BSC-4FB2-GL
External Size(W*D*H)	1383*775*2250mm	
Internal Size(W*D*H)	1210*600*660 mm	
Tested Opening	Safety height 200mm (8")	
Max Opening	470mm	
Exhaust Airflow Volume	100%: 1320m³/h(776cfm)	
Front Window	Motorized. Two-layer laminated toughened glass ≥6mm. Anti UV	
ULPA Filter	Two, 99.9995% efficiency at 0.12μm, filter life indicator	
Filter Guard Type	Aluminum alloy frame	
Noise	NSF 49≤67 dB/EN 12469≤65dB	
Illumination	≥1000Lux	
Display	Color Touch Screen	
Waterproof Socket	2, Total consumption: ≤500W	
Tap	Water tap*1, Gas tap *1	
Ground Resistance	≤ 0.10Ω	
Power Supply	AC230V, 50Hz; 115V, 60Hz, Full load Amps: 9A, BTU/Hr: 1689	
Consumption	400w	
Alarm	Abnormal airflow velocity; Filter replacement; Front window at unsafe height.	
Motor	EC motor, 115V& 230V acceptable, Speed adjustable, high efficiency and low power consumption	
Material	Working area: 304stainless steel Frame and Decorative Plate: cold-rolled steel with anti-bacteria power coating	
UV Lamp	30W Germicidal UV lamp, Emission of 253.7 nanometers for most efficient decontamination	
Illuminating Lamp	20W*2 LED lamp	
Standard Accessory	LED lamp*2, UV lamp*2, Base stand, SS water tap*1, SS gas tap*1, Drain valve, Waterproof sockets*2, Stainless Steel IV Bar with 10 hooks, Remote control	
Optional Accessory	Armrest, Airflow tester, Formalin fumigation sterilizer, Infrared sterilizer, Electric height adjustable base stand, exhaust duct	
Package Size (W*D*H)	1540*1080*1900mm	
Gross Weight	340kg	

Note: Customers need to prepare an external exhaust fan or exhaust system by themselves.